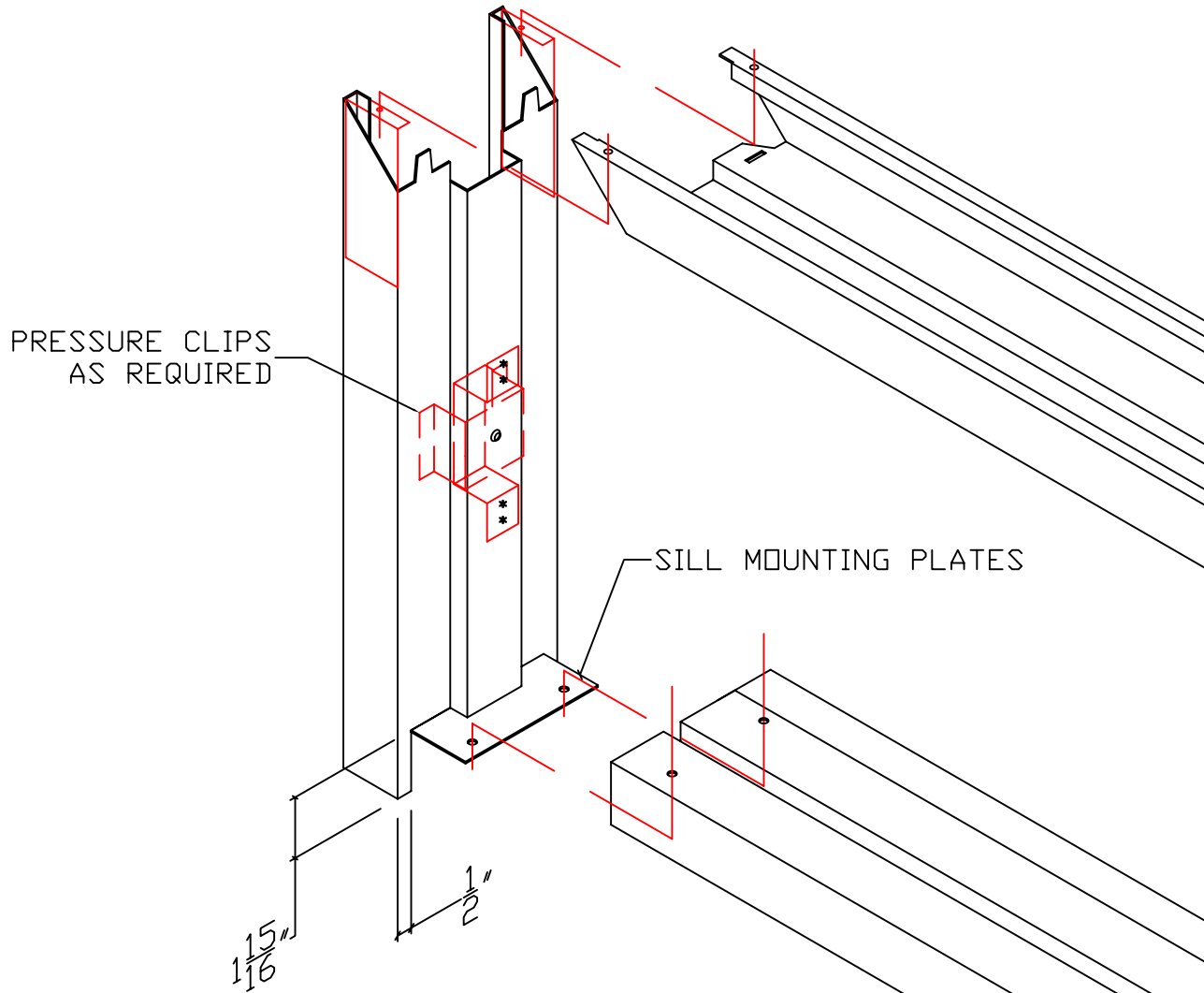
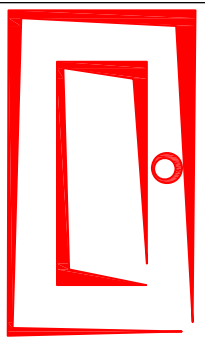


WIDTH: ROUGH OPENING + 2 1/4" = OVERALL WIDTH

HEIGHT: ROUGH OPENING + 3" = OVERALL HEIGHT



1. INSTALL DRYWALL BOARD LEAVING RECOMMENDED ROUGH OPENING AS SHOWN ABOVE
2. CENTER HEAD IN ROUGH OPENING
3. RETRACT COMPRESSION ANCHORS ON JAMBS INTO THE THROAT AS FAR AS THEY WILL GO. SLIP JAMB TABS INTO HEAD SLOTS AND PIVOT JAMBS INTO LOCKED POSITION
4. DROP IN NOTCHED SILL UNTIL IT RESTS ON TOP OF SILL MOUNTING PLATES
5. AFTER SQUARING UP JAMBS WITH SILL, ATTACH SILL TO SILL PLATE WITH #8 SCREWS THAT ARE PROVIDED.
6. ATTACH HEAD TO JAMBS USING FOUR #8 SHEET METAL SCREWS IN HOLES PROVIDED IN TOP OF HEAD. SCREWS PROVIDED WITH JAMBS
7. SQUARE TOP OF FRAME AND TIGHTEN COMPRESSION SCREWS WITH PHILLIPS SCREWDRIVER



	Karpen Steel Custom Doors & Frames	Title:	
	181 Reems Creek Rd Weaverville NC 28787 www.karpensteel.com	Description: KD BORROWED LITE DROP IN SILL INSTALLATION INSTRUCTIONS	
	Tel: 828-645-4821 Fax: 800-851-2131	File name:	CUFP0031
	Drawn/Revised by: B Harris	Rev. Date:	25APR07