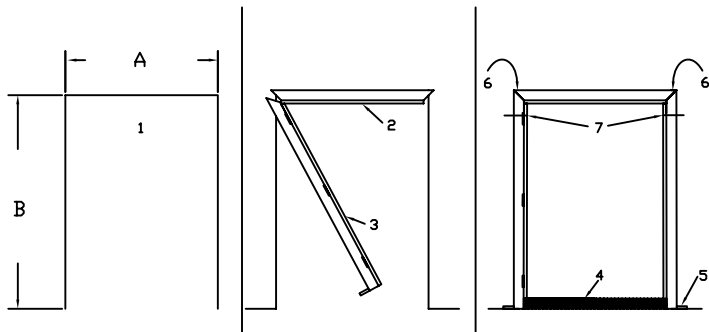


NOTE:

- A: FINISH OPENING PLUS 1 1/2" TO 2"
- B: FINISH OPENING PLUS 1/2" TO 1 1/2"



- 1 INSTALL DRYWALL BOARD LEAVING ROUGH OPENING AS SHOWN
- 2 CENTER HEAD IN ROUGH OPENING
- 3 RETRACT COMPRESSION ANCHORS ON JAMBS INTO THE THROAT AS FAR AS THEY WILL GO. SLIP JAMB TABS INTO HEAD SLOTS AND PIVOT JAMBS INTO LOCKED POSITION
- 4 LOCATE REMOVABLE SPREADER AT FRAME BASE FOR OPENING WIDTH
- 5 SQUARE BASE OF FRAME AND INSTALL BASE ANCHOR SCREWS INTO FLOOR PLATE
- 6 ATTACH HEAD TO JAMBS USING FOUR #8 SHEET METAL SCREWS IN HOLES PROVIDED IN TOP OF HEAD. (REQUIRED ON UL FRAMES) SCREWS PROVIDED WITH JAMBS
- 7 SQUARE TOP OF FRAME AND TIGHTEN COMPRESSION SCREWS WITH PHILLIPS SCREWDRIVER

INSTALLATION INSTRUCTIONS



**Karpen Steel**  
**Custom Doors & Frames**  
 181 Reems Creek Rd  
 Weaverville NC 28787  
 www.karpensteel.com

Tel: 828-645-4821  
 Fax: 800-851-2131

Revised by: **J Schandavel**

Customer name:

Job name:

Description: **KD Assembly/Anchors & Installation Instructions**

File name:

**CUFM0006**

REV

Revision Date:

**30JULY07**

Sheet